

A	REMOVE INDICATED SECTIONS OF EXISTING STOREFRONT OR WALL TO ALLOW FOR THE INSTALLATION OF NEW DOORS AND STOREFRONT.
B	REMOVE EXISTING DOORS, TO BE REPLACED WITH STOREFRONT-TO MATCH EXISTING.
C	SAFELY OPENING IN EXISTING MASONRY WALL FOR NEW STOREFRONT DOOR. PREPARE FOR NEW DOOR AND FRAME. LOCATION TO BE VERIFIED IN FIELD WITH PROJECT MANAGER. REFERENCE STRUCTURAL DRAWINGS FOR OPENING IN CHU TO EXISTING WITH BLOCK JOINTS. EXACT LOCATION TO BE FIELD VERIFIED WITH PROJECT MANAGER. REFERENCE DOOR AND FRAME ELEVATIONS, AND DOOR SCHEDULE.
D	REMOVE EXISTING DOOR. FRAME TO REMAIN IF IN GOOD CONDITION. SEE SHEET A-4 AND A-6 FOR ADDITIONAL INFORMATION.
E	EXISTING OVERHEAD COILING DOOR TO REMAIN.
F	REMOVE SECTION OF EXISTING WALL.
G	REMOVE PER POYS SIGNAGE FROM EXTERIOR CANOPY, CANOPY TO REMAIN.
H	SAFELY OPENING IN EXISTING MASONRY WALL FOR 6'-4" X 7" OPENING FOR NEW HOLLOW METAL DOOR AND FRAME. LOCATION TO BE VERIFIED IN FIELD WITH PROJECT MANAGER. REFERENCE STRUCTURAL DRAWINGS FOR OPENING IN CHU TO EXISTING WITH BLOCK JOINTS. EXACT LOCATION TO BE FIELD VERIFIED WITH PROJECT MANAGER. REFERENCE DOOR AND FRAME ELEVATIONS, AND DOOR SCHEDULE.
J	EXISTING ELECTRIC METER TO REMAIN.
K	EXISTING GAS METER TO REMAIN.
L	EXISTING DOOR AND FRAME TO REMAIN - NEEDS REPAIR, BRING UP TO CODE.
M	REMOVE PORTION OF CONCRETE FOR THE CONSTRUCTION OF NEW NEW 4' X 8' TRUCK RAMP. REFERENCE STRUCTURAL DRAWINGS FOR MORE DETAILS.
N	REMOVE INDICATED SECTION OF STOREFRONT FOR INSTALLATION OF NEW HOLLOW METAL DOOR AND FRAME WITH STUD WALL ABOVE.
P	REMOVE EXISTING DOOR AND REPLACE WITH STOREFRONT FRAMING AND GLASS TO MATCH EXISTING.
Q	EXISTING DELIVERY-DOOR FRAME TO REMAIN. SEE SHEET A-4 FOR REQUIREMENTS.
R	REMOVE SECTION OF EXISTING WALL TO BE REPLACED WITH NEW OVERHEAD LIFT DOOR. SEE SHEET A-4.
S	REMOVE EXISTING EXTERIOR CANOPY MATERIAL, FRAMEWORK TO REMAIN FOR RE-USE.
T	REMOVE EXISTING DOCK LADDER AND DOCK BUMPERS.
U	REMOVE TREND DRAIN, REROUTE EXISTING STORM WATER DRAIN FOR NEW TREND DRAIN.
V	REMOVE/TRIM BUSHES FROM EXISTING PLANTER AREAS AS INDICATED FOR FUTURE PLANT.
W	REMOVE PORTION OF RAILING AS INDICATED.
X	REMOVE EXISTING SCISSOR LIFT AND MOTOR. FLAT PIT WITH CONCRETE.

- 1 REMOVE ALL EXIST. PHONE LINES, EXPOSED CONDUIT ALARM WIRES AND
ELECTRIC, CABLE, OPTIC PANELS, SPEAKERS, WIRING, SECURITY GRILLS,
ETC. NOT NOTED FOR REUSE.
- 2 REMOVE ALL EXISTING WALLS, DOORS, FALSE FLOORS AND STEPS NOT
NOTED FOR REUSE.
- 3 REMOVE ALL CARPET, TIE, MASTIC ETC. THROUGHOUT LEASE SPACE
- 4 PEP BOYS TO REMOVE ALL COUNTERS, FURNITURE, FIXTURES AND
RACKS
- 5 REMOVE EXISTING DRINKING FOUNTAIN FOR THE INSTALLATION OF A NEW
HILLO DRINKING FOUNTAIN.
- 6 REMOVE EXISTING GLAZIALW. PANELING AND ALL FOREIGN MATERIALS
FROM EXISTING WALLS
- 7 REMOVE ALL EXISTING SIGNS, FILMS, AND OTHER FOREIGN OBJECTS
FROM WINDOWS
- 8 REMOVE ALL EXISTING WALLS AND GLASS. SEE SHEET #1 FOR NEW DOOR
AND WALL LOCATION.
- 9 EXISTING ELECTRIC PANELS TO REMAIN.
- 10 PATCH, REPAIR OR REMOVE ANY DAMAGED GYPSUM BOARD ON WALLS
CUT OPENINGS IN MASONRY WALL FOR NEW DOORS. LOCATION TO BE
11 FIELD WITH PROJECT MANAGER. REFERENCE STRUCTURAL
DRAWINGS.
- 12 REMOVE ALL PLUMBING FIXTURES, PARTITIONS, AND ACCESSORIES. CAP
ALL WATER SUPPLY LINES AND SINK WASTE LINE TO NEAREST TEE. CAP
TOILET WASTE LINE FLUSH WITH FLOOR LEVEL.
- 13 GC TO REMOVE EXISTING GALER AND ASSOCIATED POWER.
- 14 EXISTING RESTROOM AND COMPUTER CLOSET TO REMAIN.

1.	<p>THE GENERAL CONTRACTOR SHALL FURNISH ALL LABOR AND MATERIALS TO BE REQUIRED TO COMPLETE THE PROJECT. THE GENERAL CONTRACTOR SHALL BE RESPONSIBLE FOR THE PROPER DISPOSITION OR REUSE OF ALL ITEMS SHOWN ON DRAWING.</p>	<p>THE GENERAL CONTRACTOR SHALL REMOVE ALL UNUSED SWITCH PLATES, ELECTRICAL PANELS, AND/OR CONDUIT. ALL SUCH MATERIALS SHALL BE COMPLETELY REMOVED TO THE SOURCE MUST TERMINATE IN A RECYCLING BIN WITH COVER AND APPROPRIATE INSULATORS SUFFICIENT TO MAINTAIN COMPLIANCE WITH APPLICABLE CODES.</p>
2.	<p>THE GENERAL CONTRACTOR SHALL PROTECT AT ALL TIMES THE PROPERTY OF THE OWNER AND OTHER TENANTS IN THE BUILDING. SUCH PROTECTION SHALL BE LIMITED TO THE PROTECTION OF ELEVATORS, TOILETS, DOORS, TRIM AND ELECTRICAL EQUIPMENT OR OPENINGS NECESSARY FOR THE REMOVAL OF ANY ITEM.</p>	<p>ALL ITEMS GRAPHICALLY DEPICTED AS BEING DEMOLISHED SHALL BE REMOVED. THE KEY NOTES ARE A REFERENCE TO AND THE CONTRACTOR SHALL NOT BE REQUIRED TO BE PRECISE IN DESCRIBING THE SCOPE OF DEMOLITION WORK DEPICTED IN THE DOCUMENTS.</p>
	<p>ASBESTOS TESTING PRIOR TO CONSTRUCTION IS THE RESPONSIBILITY OF THE GENERAL CONTRACTOR/ TENANT. TESTING MUST BE COMPLETED BY GENERAL CONTRACTOR PRIOR TO ANY DEMOLITION OR CONSTRUCTION. ALL RESULTS MUST BE PROVIDED TO TENANT AND LI UPON RECEIPT OF ALL RESULTS.</p>	<p>THE REMOVAL AND LEGAL DISPOSAL OF ANY ASBESTOS SHALL BE THE RESPONSIBILITY OF THE LANDLORD. THE GENERAL CONTRACTOR SHALL RECEIVE THE BUILDING DEMOLITION PERMITS AND BE CONSIDERED THE PROJECT MANAGER FOR ALL INSTRUCTIONS.</p>
	<p>THE GENERAL CONTRACTOR SHALL DIRECT ALL NECESSARY SHORING, BRACING, AND TEMPORARY PATIOMS AND BRACING TO BE INSTALLED TO PROTECT THE EXISTING BUILDING WHILE DEMOLITION AND CONSTRUCTION IS IN PROGRESS.</p>	<p>SUCH CONFUSION EXIST RELATIVE TO THE REMOVAL OF SPECIFIC ITEMS OR THE RE-USE OF SAME, CONTACT THE AUTOTZONE FIELD PROJECT MANAGER FOR INSTRUCTIONS.</p>
	<p>ALL WORK DEMOLISHED SHALL BE REMOVED FROM THE PREMISES DAILY, EXCEPT ITEMS TO BE RE-USED OR RETURNED TO THE OWNER OR AS DIRECTED OTHERWISE.</p>	<p>GENERAL CONTRACTOR SHALL MAINTAIN EXISTING FIRE ALARM, BURGLAR, AND NETWORK WIRING IN USE BY PEP BOYS OPERATIONS. GENERAL CONTRACTOR TO VERIFY AND/AND WIRING PRIOR TO DEMOLITION.</p>
	<p>PATCH AND REPAIR EXISTING CONSTRUCTION IMPACTED BY DEMOLITION TO RESTORE FINISH TO "LIKE NEW" CONDITION UNLESS DIRECTED OTHERWISE.</p>	<p>GENERAL CONTRACTOR SHALL REMOVE PEP BOYS BEST CORES WHEN DEMOLITION OF AN EXISTING DOOR TAKES PLACE. BEST CORES SHALL BE GIVEN TO PEP BOYS STORE MANAGER FOR STORAGE IN PEP BOYS STORE S4C.</p>
	<p>DOOR HARDWARE, LIGHT FIXTURES, ETC. REMOVED AND NOT IMMEDIATELY RE-USED ARE TO BE STORED IN AN AREA DESIGNATED BY THE PROJECT MANAGER.</p>	<p>GENERAL CONTRACTOR SHALL MAKE SAFE, DECOMMISSION AND DEMOLISH EXISTING PEP BOYS BALRA, SPARE ELECTRICAL CIRCUIT SHALL BE REMOVED.</p>
	<p>TAKE PRECAUTION AGAINST ELECTRICAL AND FIRE HAZARDS DURING DEMOLITION. DO NOT INTERRUPT POWER IN OCCUPIED TENANT SPACES WITHOUT PRIOR NOTICE AND APPROVAL OF LANDLORD/OWNER.</p>	<p>GENERAL CONTRACTOR TO LOCATE AND SAW CUT FLOOR FOR FLUSH POWER/HMDATA. SEE PLANS FOR LOCATION.</p>
	<p>CONCRETE TO BE REMOVED SHALL BE WATER SAUCUT ONLY PRIOR TO REMOVAL IN ORDER TO PROTECT SLAB TO REMAIN, WHEN CUTTING GRINDING CONCRETE OR CMU, OR PERFORMING OTHER CONCRETE WORK, PROTECT ALL EXPOSED MERCHANDISE AND EQUIPMENT WITH SHEETS OF PLASTIC.</p>	



Date: _____
Exp _____
Date: 11-30-24 _____
William J Fearon AIA
IL 001-024608

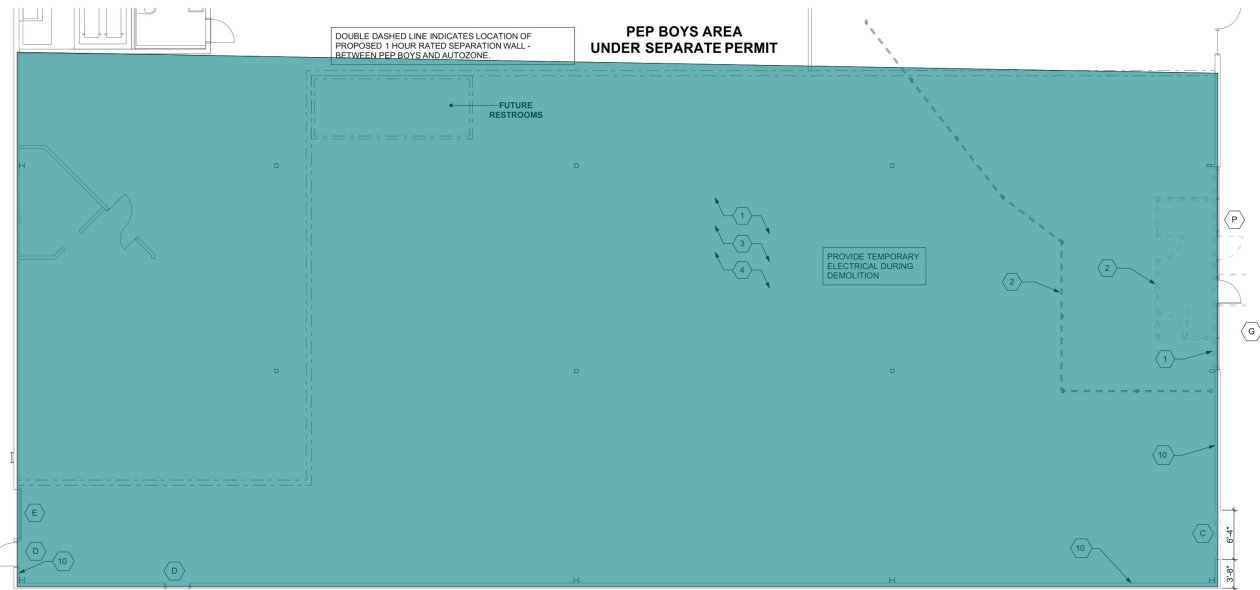


DISTRIBUTION:	DATE:
0 BID	09-20-24

CONTRACTOR(S) SHALL VERIFY EXISTING CONDITIONS AND CORRELATE DIMENSIONS PRIOR TO PROVIDING THE WORK DETAILED IN THESE DRAWINGS, AND SHALL PROMPTLY NOTIFY THE ARCHITECT OF ANY DISCREPANCIES.

DRAWING NAME + NUMBER

D-1



1 DEMOLITION PLAN
SCALE: 1/8" = 1'-0"

SCALE: 1/8" = 1'-0"

 DEMO: EXISTIN... 10340.3 SQ FT

MOTION SENSOR CMR-9 FURNISHED BY AUTOZONE.
ELECTRIC MINI-TANK WATER HEATER (PROVIDED BY AUTOZONE, INC.) ARISTON MODEL GL 4 T; FINAL HOOK-UP BY ELECTRICAL CONTRACTOR.
RESTROOM ELECTRICAL NOTES

DESIGN PARAMETERS: 2020 NATIONAL ELECTRICAL CODE

1. ALL WIRING SHALL COMPLY WITH LOCAL AND NATIONAL CODES: THE MOST STRINGENT SHALL GOVERN.
2. THE ELECTRICAL CONTRACTOR SHALL PROVIDE THE FOLLOWING:
 - A. FIELD VERIFIED TYPEDWRITTEN PANEL SCHEDULES.
 - B. COMPLETE "AS BUILT" RED LINE DRAWINGS TO INCLUDE RISER DIAGRAM AND PANEL SCHEDULES.
 - C. LABEL ALL ABANDONED BREAKERS AND SEAL BLANKS AS REQUIRED.
3. ALL EXPOSED CONDUIT SHALL BE THE INTERMEDIATE METAL TYPE.
4. ALL INTERIOR WIRING SHALL BE SOFT-DRAWN COPPER. NO ALUMINUM WIRING PERMITTED.
5. ELECTRICAL CONTRACTOR SHALL VERIFY THAT THE ELECTRIC METER AND BASE ARE IN CLEAN SERVICEABLE CONDITION AND THAT ALL LINE VOLTAGE CONNECTIONS ARE TIGHT AND SECURE.
6. ALL CIRCUITS SHALL BE GROUNDED AS PER THE NATIONAL ELECTRIC CODE.
7. IF AN ALARM SYSTEM IS REQUIRED SEE SHEET E-7 FOR ELECTRICAL REQUIREMENTS.
8. ALL LINE VOLTAGE WIRE SHALL BE IN CONDUIT END TO END OF CIRCUIT RUN. SIZE CONDUIT AND PROVIDE ALL JUNCTION BOXES TO MEET THE CURRENT EDITION OF THE NATIONAL ELECTRIC CODE.
9. FOR STORES WITH CEILINGS EXTEND ALL CONDUITS FOR LOW VOLTAGE WIRE, TELEPHONE AND DATA CABLES 8" ABOVE THE PLANE OF THE CEILING WITH A HORIZONTAL TURN OUT.
10. FOR STORES WITHOUT CEILINGS CONDUITS FOR LOW VOLTAGE WIRE, TELEPHONE AND DATA CABLES SHALL BE CONTINUOUS END TO END OF WIRE RUN.
11. REFER TO OTHER SHEETS FOR POWER POLE NOTES AND LOCATIONS, MAN AND SERVICE DOOR REQUIREMENTS AND TO SHEET M-1 FOR LOCATION OF RTU CONVENIENCE RECEPTACLE.
12. PROVIDE PULL STRINGS IN ALL EMPTY CONDUITS.
13. ELECTRICAL CONTRACTOR TO PROVIDE EMPTY CONDUIT & BOXES BETWEEN RTU'S AND THERMOSTAT LOCATIONS INDICATED. MECHANICAL CONTRACTOR TO PROVIDE CONTROL WIRING AND COMPLETE INSTALLATION.
14. MOUNT JUNCTION BOX TIGHT TO FLOOR FOR DISPLAY BASE FLEX OUTLET. OUTLET ON FLEX TO BE INSTALLED HORIZONTALLY IN FIXTURE BASE AFTER FIXTURES ARE SET IN PLACE.
15. NO BRANCH CIRCUIT SHALL BE INSTALLED IN A MULTIWIRE BRANCH CIRCUIT CONFIGURATION. NEUTRAL CONDUCTORS SHALL NOT BE SHARED BETWEEN DIFFERENT CIRCUITS.
16. ALL NEW CONDUIT SHALL BE INSTALLED SO THAT THE CONDUIT IS 7/8" FROM THE SURFACE OF THE ROOF DECK IN COMPLIANCE WITH THE REQUIREMENTS OF THE NEC.

1 ELECTRICAL NOTES

J-BOX AT 48" AFF FOR THE VENSTAR PUSH BUTTON, AND J-BOX AT 54" AFF FOR ALARM KEY PAD. BOXES TO BE LOCATED ABOVE, OR ANOTHER AND MOUNTED ON A POWER POLE CLOSEST TO THE OFFICE AREA.

CONTRACTOR TO SUPPLY 120/LOW VOLTAGE TO PEDESTAL AT ENTRANCE DOORS. REFER TO SECURITY DETAIL SHEET E2-1

ADA NOTE

LIGHT SWITCHES, ELECTRICAL OUTLETS, AND OTHER ENVIRONMENTAL CONTROLS SHALL HAVE OPERABLE PARTS TO THE CONTROLS LOCATED NO HIGHER THAN 48", AND NO LOWER THAN 15".

ELECTRICAL IDENTIFICATION NOTE

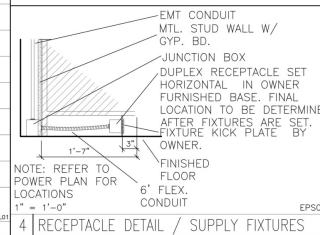
PROVIDE IDENTIFICATION FOR ALL PANELS, DISCONNECTS AND TRANSFORMERS USING ENGRAVED NAMEPLATES, WHITE LETTERING ON BLACK BACKGROUND. NAMEPLATES SHALL IDENTIFY PANEL DESIGNATION (NAME) VOLTAGE, PHASE AND WIRE CONFIGURATION. PROVIDE TYPE WRITTEN DIRECTORIES UNDER PLASTIC COVER FOR ALL PANEL BRANCH CIRCUITS IDENTIFY THE WIRING FOR ALL BRANCH CIRCUITS USING APPROVED WIRE MARKERS.

WIRING COLOR CODE

ALL WIRING SHALL BE COLOR-CODED AS FOLLOWS:
208/120 VOLT SYSTEMS
PHASE A-BROWN
PHASE B-BLUE
PHASE C-YELLOW
NEUTRAL-WHITE
480/277 VOLT SYSTEMS
PHASE A-BROWN
PHASE B-YELLOW
PHASE C-PURPLE
NEUTRAL-WHITE WITH TRACER OR GRAY

COLOR-CODE SHALL IDENTIFY THE SAME PHASE THROUGHOUT THE SYSTEM, FROM SERVICE SWITCH OR TRANSFORMER

SYM	DESCRIPTION	FURN.	REMARKS
⊖	EXHAUST FAN RECESSED	AUTOZONE	INSTALLED BY HVAC CONTRACTOR, WIRED BY ELECTRICAL CONTRACTOR.
⊕	JUNCTION BOX	G.C.	SEE SHT. E2 FOR ADDITIONAL JUNCTION BOX LOCATIONS AND REQUIREMENTS AT DOORS FOR ALARMS.
⊕	THERMOSTAT	AUTOZONE	WALL MOUNT ABOVE ELECTRICAL PANELS. 9'-0" A.F.F. MAX.
⊕	HVAC DISCONNECT WITH UNIT		REFER TO HVAC SPECIFICATIONS
⊕	POWER POLES	AUTOZONE	REFER TO PLAN FOR LOCATION
⊕	SIMPLEX RECEPT.	G.C.	REFER TO PLAN FOR LOCATIONS
⊕	DUPLEX RECEPT. / FLOOR RECEPT.	G.C.	REFER TO PLAN FOR LOCATIONS
⊕	QUADRUPEL RECEPT.	G.C.	REFER TO PLAN FOR LOCATIONS
⊕	WEATHERPROOF DUPLEX RECEPT (GFI)	G.C.	REFER TO PLAN FOR LOCATIONS



THE ELECTRICAL CONTRACTOR SHALL BEAR ALL EXPENSES THAT OTHER TRADES INCUR AS A RESULT OF PHYSICAL MODIFICATIONS REQUIRED BY APPROVED ALTERNATE ELECTRICAL EQUIPMENT OTHER THAN ORIGINALLY SPECIFIED OR SCHEDULED.

THE FIRE ALARM CONTRACTOR IS SOLELY RESPONSIBLE FOR THE FIRE ALARM DESIGN, DESIGN APPROVAL, INSTALLATION AND FINAL ACCEPTANCE BY THE AUTHORITIES HAVING JURISDICTION. DEVICES AND EQUIPMENT ON THE DRAWING ARE FOR REFERENCE ONLY. FINAL DEVICE TYPES, QUANTITIES, AND LOCATIONS ARE THE RESPONSIBILITY OF THE FIRE ALARM CONTRACTOR. THE ELECTRICAL CONTRACTOR SHALL COORDINATE REQUIREMENTS WITH THE FIRE ALARM CONTRACTOR AND PROVIDE ROUGH-IN AND POWER FOR ALL DEVICES PER THE APPROVED FIRE ALARM PLANS.

THE CONTRACTORS SHALL COORDINATE ALL REQUIRED ACCESS TO ALL ADJOINING SPACES AND LOCKED SPACES WITH THE GENERAL CONTRACTOR WHO SHALL IN TURN COORDINATE THESE REQUIREMENTS WITH THE BUILDING MANAGEMENT TEAM.

ANY PENETRATIONS OF A FIRE RATED WALL BY ANY MECHANICAL AND PLUMBING PIPING, DUCTWORK (WITHOUT FID/SD), CONDUITS AND CABLEING FOR POWER, CONTROLS OR DATA/TELEPHONE MUST BE FIRED SEALED PER U.L. DETAILS ON THIS SHEET. REFER TO ARCHITECTURAL CODE REVIEW PLAN SHEETS FOR EXACT LOCATIONS OF ALL FIRE RATED WALLS.

ACEI
ADVANCED CONSULTING ENGINEERS
MECHANICAL ELECTRICAL INDUSTRIAL
PO BOX 427
ROSELLE, AR 72756
PH 479-631-1772
FX 479-631-1854
ACEI@ADVANCEDENGINEERS.COM



CLIENT • PROJECT

AutoZone
AUTOZONE
123 SOUTH FRONT STREET
MEMPHIS, TN 38103

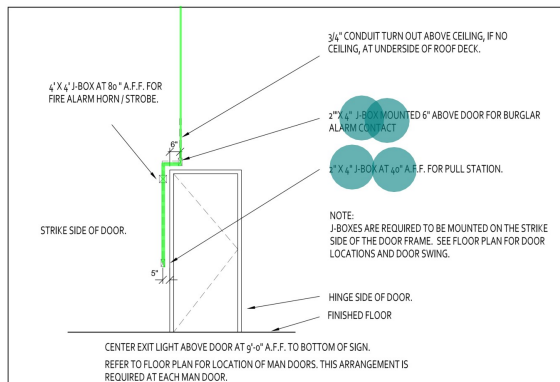
TENANT FIT-OUT
AUTOZONE
STORE #9244
620 NORTH GREEN BAY ROAD
WAUKEGAN, IL 60085

DISTRIBUTION: DATE:
BID: 09-20-2024

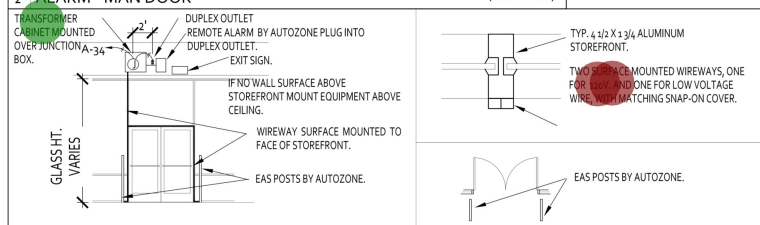
PROJECT INFO:
PROJECT NUMBER: ---
DRAWN BY: CH-J
CHECKED BY: JD
NOTE • COPYRIGHT:
CONTRACTOR SHALL VERIFY EXISTING CONDITIONS AND CONDITIONS INTERFERING WITH THE ABILITY OF THE CONTRACTOR TO COMPLETE THE WORK AS OUTLINED SHALL BE BROUGHT TO THE ATTENTION OF THE ARCHITECT. ANY COST SAVINGS OPTIONS OR REUSE OF EXISTING EQUIPMENT, MATERIAL, OR DEVICES SHALL BE MADE AVAILABLE TO THE OWNER AND THE ARCHITECT FOR REVIEW. ANY REQUESTED CHANGES DUE TO THE CONTRACTOR'S OVERSIGHT OR FAILURE TO VISIT THE SITE PRIOR TO BID SHALL NOT BE AUTHORIZED OR COMPENSATED. COORDINATE ALL COVERAGES AND LOCATIONS PRIOR TO START OF CONSTRUCTION. LAYOUT ALL EQUIPMENT IN MECHANICAL ROOM TO ENSURE PROPER PHASE AND CLEARANCES ARE AVAILABLE. CONTACT ARCHITECT IMMEDIATELY WITH ANY ISSUES.

Power Plan

E1

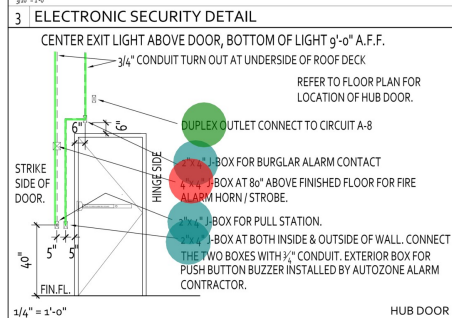


2 ALARM - MAN DOOR (interior view)



- NOTES:
1. AUTOZONE'S EQUIPMENT INSTALLER WILL FURNISH & INSTALL ALL REQUIRED SECURITY ALARM EQUIPMENT INCLUDING FLOOR POSTS, TRANSFORMER CABINET AND REMOTE ALARM SOUNDER AND COUNTER ABOVE THE DOOR.
 2. GENERAL CONTRACTOR TO INSTALL JUNCTION BOX EITHER ON WALL ABOVE STOREFRONT, OR IF NO WALL SURFACE AVAILABLE THEN ABOVE CEILING ALONG WITH DUAL WIREWAY ON THE SURFACE OF THE STOREFRONT IN ROUTING AS INDICATED TO CONNECT FLOOR-MOUNTED EAS POSTS BOTH TO THE JUNCTION BOX ABOVE AND TO EACH OTHER.
 3. GENERAL CONTRACTOR TO RUN 120 VOLT POWER FROM THE JUNCTION BOX ABOVE DOWN TO ONE OF THE PEDESTALS. LEAVE SNAP-ON COVER OFF THE RACEWAY SO THAT AUTOZONE'S EQUIPMENT VENDOR CAN INSTALL BOTH THE CROSSOVER CONNECTION TO THE OTHER PEDESTAL AND LOW VOLTAGE WIRING FOR THE SYSTEM.

3 ELECTRONIC SECURITY DETAIL



4 COMMERCIAL ENTRY DOOR

- P: DUPLEX RECEPT... 1.0 EA
- MISC: 2"x4" Junction ... 7.0 EA
- MISC: 4"x4" Junction ... 1.0 EA
- LV: 3/4" EMT Conduit... 58.9 FT
- P: Surface Mounted ... 2.0 EA
- P: transformer Cabine... 1.0 EA



CLIENT • PROJECT



AUTOZONE
123 SOUTH FRONT STREET
MEMPHIS, TN 38103

TENANT FIT-OUT
AUTOZONE
STORE #9244
620 NORTH GREEN BAY ROAD
WAUKEGAN, IL 60085

DISTRIBUTION: DATE:

BID: 09-20-2024

PROJECT INFO:

PROJECT NUMBER: _____

DRAWN BY: CH-J

CHECKED BY: JD

NOTE • COPYRIGHT:

CONTRACTOR SHALL VERIFY EXISTING CONDITIONS AND CORRECT ANY DISCREPANCIES PRIOR TO PROCEEDING THE WORK. RETAIN THE ARCHITECT OF ANY DISCREPANCIES.

UNAUTHORIZED REPRODUCTION OR OTHER USE OF THIS DRAWING IS PROHIBITED.

Door Details

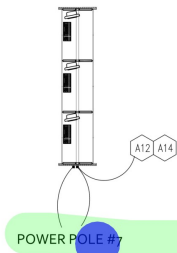
E2.1

ACEI
ADVANCED CONSULTING ENGINEERS
MECHANICAL ELECTRICAL INDUSTRIAL

PO BOX 427
ROGERS, AR 72756
PH 479-637-1772
FX 479-637-1859
ACEI@ADVENGINEERS.COM

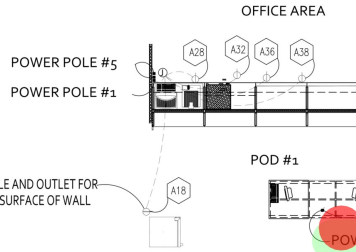
PRIOR TO BID/START OF CONSTRUCTION REQUIREMENTS THESE DOCUMENTS ARE DIAGNOSTIC IN NATURE AND IN SOME CASES, BASED ON INFORMATION THAT IS PROVIDED BY THE OWNER. THE CONTRACTOR SHALL VERIFY EXISTING CONDITIONS IN THE FIELD PRIOR TO BID. ANY DISCREPANCIES OR CONDITIONS INTERFERING WITH THE ABILITY OF THE CONTRACTOR TO COMPLETE THE WORK AS OUTLINED SHALL BE BROUGHT TO THE ATTENTION OF THE ARCHITECT. ANY COST SAVINGS OPTIONS OR REUSE OF EXISTING EQUIPMENT, MATERIAL OR DEVICES SHALL BE MADE AVAILABLE TO THE OWNER AND THE ARCHITECT FOR REVIEW. ANY REQUESTED CHANGES DUE TO THE CONTRACTOR'S OVERSIGHT OR FAILURE TO VISIT THE SITE PRIOR TO BID, SHALL NOT BE AUTHORIZED OR COMPENSATED. COORDINATE ALL LOUVER SIZES AND LOCATIONS PRIOR TO START OF CONSTRUCTION. LAYOUT ALL EQUIPMENT IN MECHANICAL ROOM TO ENSURE PROPER SPACING AND CLEARANCES ARE AVAILABLE. CONTACT ARCHITECT IMMEDIATELY WITH ANY ISSUES.

COMMERCIAL COUNTER

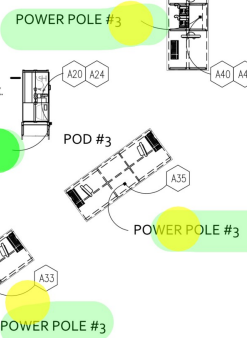


INSTALL FLEX CABLE AND OUTLET FOR COKE COOLER ON SURFACE OF WALL

INSTALL POWER POLE FOR TESTER AGAINST FIXTURE UPRIGHT, ANCHOR TO ROOF DECK, AND STRAP POLE TO FIXTURE. OUTLETS IN POWER POLE SHOULD FACE TESTER NOT THE AISLE.



COMMERCIAL



- SEE SHEET E-1 FOR THE DIMENSIONAL LOCATIONS OF JUNCTION BOXES THAT WILL SERVE EACH OF THE POWER POLES.
- FOR THE OFFICE AREA AND CAMERA POWER POLES, RUN CONDUCTORS DOWN POLE AND OUT THROUGH A 1-INCH FLEXIBLE CONDUIT TO A JUNCTION BOX. MOUNT JUNCTION BOX ON WALL AT THE FLOOR LINE, IF NO WALL SURFACE AVAILABLE THEN LEAVE JUNCTION BOX ON FLOOR ADJACENT TO POWER POLE.
- RUN INDIVIDUAL CIRCUITS TO EACH DEVICE AS INDICATED IN THE DRAWING IN 1/2-INCH FLEXIBLE CONDUIT.
- TAG EITHER THE COVER PLATE OR THE BOX IN WHICH EACH DEVICES IS PLACED WITH THE CIRCUIT NUMBER SERVING THAT DEVICE.
- FIXTURE LAYOUT MAY CONTAIN ONE LESS HARD PARTS POD SEE OVERALL FIXTURE PLAN ON SHEET A-1 FOR TRUE NUMBER REQUIRED.
- HUB AND COMMERCIAL COUNTERS MAY CONTAIN ONE MORE SECTION THAN SHOWN, HOWEVER, THE ELECTRICAL REQUIREMENTS WILL NOT CHANGE FROM WHAT IS CURRENTLY INDICATED.
- AT POD #1 PLUG THE FOLLOWING ITEMS INTO THE POWER BARS SERVING CIRCUIT A29: NON MANAGED SWITCH; REGISTER; MONITOR; DEBIT PAD; RECEIPT PRINTER; LABEL PRINTER; SENSORMATIC DEACTIVATOR; SCAN GUN
- AT POD #2 PLUG THE FOLLOWING ITEMS INTO THE POWER BARS SERVING CIRCUIT A33: NON MANAGED SWITCH; REGISTER; MONITOR; DEBIT PAD; RECEIPT PRINTER; LABEL PRINTER; LASER PRINTER; SENSORMATIC DEACTIVATOR; SCAN GUN
- AT COMMERCIAL COUNTER PLUG THE FOLLOWING ITEMS INTO THE POWER BARS SERVING CIRCUIT A21: NON MANAGED SWITCH; REGISTER; MONITOR; DEBIT PAD; RECEIPT PRINTER; LABEL PRINTER; LASER PRINTER; SENSORMATIC DEACTIVATOR; SCAN GUN



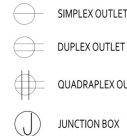
CLIENT • PROJECT

AutoZone
AUTOZONE
123 SOUTH FRONT STREET
MEMPHIS, TN 38103

TENANT FIT-OUT
AUTOZONE
STORE #9244
620 NORTH GREEN BAY ROAD
WAUKEGAN, IL 60085

1 NARROW FIXTURE LAYOUT - UNDERCOUNTER WIRING

- LABEL ALL CIRCUITS ON J-BOXES AND ALL OUTLETS WITH MULTIPLE CIRCUITS.
- ALL WIRING ON FLOOR UNDER COUNTERS SHALL BE IN 3/8" FLEXIBLE CONDUIT.
- RUN ALL CONDUIT AND CABLES UNDER AND NOT THROUGH SHELF SUPPORTS.
- DO NOT PERMANENTLY ATTACH OUTLET BOXES OR FLEX CONDUIT TO FLOOR.
- MOUNT OUTLETS IN KICKPLATES AFTER OWNER'S FIXTURES HAVE BEEN INSTALLED.
- INSTALL JUNCTION BOXES AT LOCATIONS SHOWN FOR POWER.
- AUTOZONE'S CONTRACTOR WILL INSTALL CAT 5 CABLE FOR DATA AND PHONE LINES IN CONDUIT TO BE INSTALLED UNDER THIS CONTRACT.
- ALL CIRCUITS OVER 100 FEET IN LENGTH SHALL BE RUN WITH #10 AWG.
- PROVIDE 2 PULL WIRES IN ALL EMPTY CONDUITS.
- LOCATE ALL POWER POLES AFTER FIXTURES ARE IN PLACE.



- GENERAL CONTRACTOR TO FURNISH ALL POWER POLES. POWER POLES ARE AVAILABLE AT GRAYBAR ELECTRIC 314-573-9086. EMAIL: AUTOZONE@GRAYBAR.COM THIS INFORMATION IS ONE SOURCE, CONTRACTOR IS FREE TO SOURCE POWER POLES FROM ANY SOURCE OF THEIR CHOOSING.
- GENERAL CONTRACTOR TO HARD WIRE ALL POWER POLES TO JUNCTION BOXES LOCATED AT THE UNDERSIDE OF THE ROOF DECK. SEE PLAN VIEW THIS SHEET FOR DIMENSIONAL LOCATIONS.
- POSITION NON-POD POWER POLES AFTER FIXTURES ARE IN PLACE, ANCHOR ALL POLES PER MANUFACTURER'S INSTRUCTIONS. MAKE FINAL CONNECTIONS THROUGH FLEX CONDUIT TO JUNCTION BOXES AT ROOF DECK.
- AT THE BOTTOM OF THE OFFICE POWER POLE MAKE 1" FLEX CONNECTIONS TO JUNCTION BOXES AND FROM THE JUNCTION BOX MAKE CONNECTIONS USING 3/8" FLEX TO EACH OF THE DEVICES.

- OFFICE AREA POWER POLE - 3" DIA. PVC PIPE LABEL FOR POWER WITH BOTTOM OF PIPE 4" ABOVE FLOOR. TWO DUPLEX OUTLETS HARD WIRE TO JUNCTION BOX AT UNDERSIDE OF ROOF DECK BY G.C. ADDITIONALLY SIMPLEX OUTLETS IN JUNCTION BOXES ON FLOOR TO BE HARD WIRED TO POLE WITH FLEXIBLE CONDUIT AND CONNECTED TO MATCHING HOME RUN CIRCUITS IN THE JUNCTION BOX AT THE UNDERSIDE OF THE ROOF DECK.
- CHECKOUT COUNTER POWER POLE WITH ONE DUPLEX OUTLET PRE-WIRED ON POLE TO BE HARD WIRED TO JUNCTION BOX AT THE UNDERSIDE OF THE ROOF DECK BY G.C.
- PARTS POD POWER POLE WITH ONE DUPLEX OUTLET PRE-WIRED ON POLE TO BE HARD WIRED TO JUNCTION BOX AT THE UNDERSIDE OF THE ROOF DECK BY G.C.
- TEST STATION POWER POLE WITH ONE SIMPLEX OUTLET AND ONE DUPLEX OUTLET PRE-WIRED ON POLE TO BE HARD WIRED TO JUNCTION BOX AT THE UNDERSIDE OF THE ROOF DECK BY G.C. ATTACH TOP OF POWER POLE TO ROOF DECK AND STRAP POLE TO THE FACE OF THE FIXTURE UPRIGHT. BOTTOM OF POLE SHOULD BE A MINIMUM OF 36" ABOVE FLOOR AND OUTLETS SHOULD FACE THE TEST STATION.
- TWO 3" DIA. PVC PIPES TO BE LOCATED ADJACENT TO POWER POLE #6. LABEL ONE FOR "DATA" AND THE OTHER FOR "SECURITY" POLES TO BE RUN FROM THE BOTTOM CHORD OF ROOF JUST TO 4" ABOVE THE FLOOR. SUPPORT PIPE WITH CLIP ANGLES AT THE FLOOR AND ANCHOR TO STRUCTURE AT THE TOP.
- COMMERCIAL COUNTER POWER POLE WITH TWO DUPLEX OUTLETS PRE-WIRED ON POLE TO BE HARD WIRED TO JUNCTION BOX AT THE UNDERSIDE OF THE ROOF DECK BY G.C.
- FOR HUB & MEGAHUB STORES - 2" x 2" TWO CHANNEL POWER POLE.

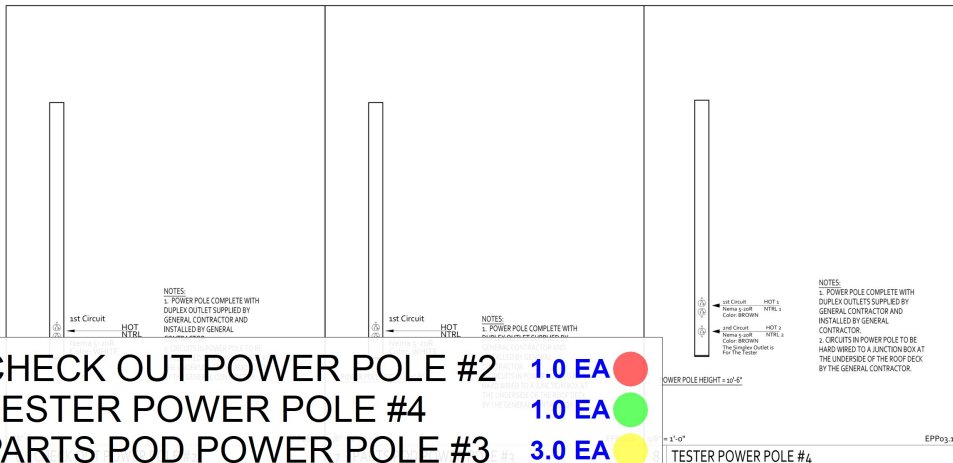
NOTE: ALL POWER POLES TO BE FURNISHED BY GENERAL CONTRACTOR

1 POWER POLE LEGEND

2 GENERAL WIRING AND POWER NOTES

3 POWER LEGEND

4 POWER POLE NOTES



- P: CHECK OUT POWER POLE #2 1.0 EA
- P: TESTER POWER POLE #4 1.0 EA
- P: PARTS POD POWER POLE #3 3.0 EA
- P: POWER POLE #7 1.0 EA

DISTRIBUTION: DATE:
BID: 09-20-2024

PROJECT INFO:
PROJECT NUMBER: ---
DRAWN BY: CH-J
CHECKED BY: JD
NOTE • COPYRIGHT:

CONTRACTOR SHALL VERIFY EXISTING CONDITIONS AND CORRELATE THIS INFORMATION PRIOR TO PROCEEDING THE WORK. RETAILER, THE CONTRACTOR, AND FINAL PRIORITY DISCREPANCIES.

UNAUTHORIZED REPRODUCTION OR OTHER USE OF THIS DRAWING IS PROHIBITED.

Power Pole Plan & Details

E2

ACEI
ADVANCED CONSULTING ENGINEERS
MECHANICAL ELECTRICAL INDUSTRIAL

PO BOX 427
ROSELLE, AR 72766
PH 479-631-1772
FX 479-631-1859
ACEI@ADVENGINEERS.COM

PRIOR TO BID/START OF CONSTRUCTION REQUIREMENTS THESE DOCUMENTS ARE DIAGNOSTIC IN NATURE AND IN SOME CASES, BASED ON INFORMATION THAT IS PROVIDED BY THE OWNER. THE CONTRACTOR SHALL VERIFY EXISTING CONDITIONS IN THE FIELD PRIOR TO BID. ANY DISCREPANCIES OR CONDITIONS INTERFERING WITH THE ABILITY OF THE CONTRACTOR TO COMPLETE THE WORK AS OUTLINED SHALL BE BROUGHT TO THE ATTENTION OF THE ARCHITECT. ANY COST SAVINGS OPTIONS OR REUSE OF EXISTING EQUIPMENT, MATERIAL, OR DEVICES SHALL BE MADE AVAILABLE TO THE OWNER AND THE ARCHITECT FOR REVIEW. ANY REQUESTED CHANGES DUE TO THE CONTRACTOR'S OVERSIGHT OR FAILURE TO VISIT THE SITE PRIOR TO BID, SHALL NOT BE AUTHORIZED OR COMPENSATED. COORDINATE ALL LOUVER SIZES AND LOCATIONS PRIOR TO START OF CONSTRUCTION. LAYOUT ALL EQUIPMENT IN MECHANICAL ROOM TO ENSURE PROPER SPACING AND CLEARANCES ARE AVAILABLE. CONTACT ARCHITECT IMMEDIATELY WITH ANY ISSUES.

$$1/8'' = 1'-0''$$


AUTOZONE
123 SOUTH FRONT STREET
MEMPHIS, TN 38103

DISTRIBUTION:	DATE:
BID:	09-20-2024

Lighting Plan

E3

CONTRACTOR TO BID/START OF CONSTRUCTION REQUIREMENTS

THESE DOCUMENTS ARE DIAGRAMS AND NOT A FOUND IN SOME CASES, BASED ON INFORMATION THAT IS PROVIDED BY THE OWNER. THE CONTRACTOR SHALL VERIFY EXISTING CONDITIONS AND THE FIELD BEFORE TO BID. ANY DISCREPANCIES OR CONDITIONS INTERFERING WITH THE PROGRESS OF THE CONTRACTOR TO COMPLETE THE WORK AS OUTLINED, SHALL BE BROUGHT TO THE ATTENTION OF THE OWNER. ANY COST SAVING OPTIONS OR REUSE OF EXISTING EQUIPMENT, MATERIALS OR DEVICES, SHALL BE MADE AVAILABLE TO THE OWNER AND THE ARCHITECT FOR REVIEW. ANY CHANGES TO THE CONTRACTORS OVERSIGHT OR NEGLIGENCE, SHALL BE BROUGHT TO BID. SHALL NOT BE AUTHORIZED OR COMPENSATED. COORDINATE ALL UTILITIES AND EXISTING CONDITIONS

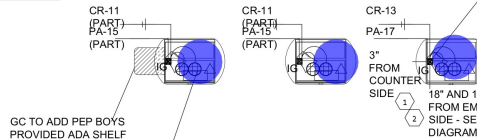
BEFORE TO START OF CONSTRUCTION. LAYOUT ALL EXISTING MECHANICAL ROOM TO ENSURE PROPER SPACE AND CLEARANCES ARE AVAILABLE. CONTACTED IMMEDIATELY WITH ANY ISSUES.

ACEI
ADVANCED CONSULTING ENGINEERS
MECHANICAL ELECTRICAL INDUSTRIAL

PO BOX 927
ROGERS, AR 72756
PH 479-631-1712
FX 479-631-1854
TIB@ADVENGINEERS.COM

• LC: M	1. WIRING THROUGH WALL ASSEMBLY. CONNECTIONS OF SIGN WIRING WILL BE BY GENERAL CONTRACTOR.	1.0 EA	UN CIRCUITRY
• LF: A	2. FOR ALL REMOTE CHANNEL LETTER SIGNS AUTOZONE'S SIGN INTERIOR SURFACE MOUNTED RACEWAY FOR TRANSFORMER. CONTRACTOR CAN TIE ALL INDIVIDUAL LETTER WIRINGS TOGETHER HOME RUN CIRCUIT.	50.0 EA	STALL AN AT GENERAL NNECT TO THE
• LF: B		62.0 EA	
• LF: C	3. SIGN VENDOR SHALL BE RESPONSIBLE FOR SEALING ALL OF THE THROUGH THE EXTERIOR WALLS WITH THE EXCEPTION OF PENETRA- TIONS OR ROOFING. THOSE PENETRATIONS SHALL BE SEALED. NOT TO VOID ANY WARRANTY CONNECTED WITH THE ROOFING. CONTRACTOR SHALL PAINT ALL EXPOSED BOXES, CONDUIT AND SURROUNDING WALLS SURFACES.	2.0 EA	TRATIONS UGH PARAPET TRACTOR SO AS ENERAL MATCH
• LF: E		25.0 EA	
• LF: F		4.0 EA	
• LF: J		5.0 EA	
• LF: K	3. SIGNAGE INSTALLATION GENERAL NOTES	3.0 EA	
LWH: 3#12 1/2"C EMT		208.8 FT	
LWH: 3#12 MC CABLE		665.8 FT	

BRANCH CIRCUITS TO BE IDENTIFIED PER NEC 210.5.
FMC TO BE PER NEC 348.
RECEPTACLES, CORD CONNECTORS & ATTACHMENT PLUGS TO BE PER NEC 406.
SWITCHBOARDS, SWITCH GEAR & PANEL BOARDS TO BE PER NEC 408.
LIGHTING TO BE PER NEC 410.
SIGNS TO BE PER NEC 600.



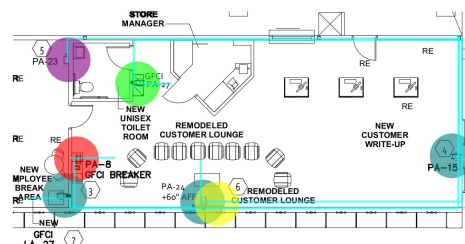
GC TO ADD PEP BOYS PROVIDED ADA SHELF PER ADA REQUIREMENTS AT FIRST POD AT 34" A.F.F.

BOTTOM OF QUADS TO BE 7" FROM THE UNDERSIDE OF COUNTERTOP WHEN INSTALLING NEW PODS (TYP)

POWER POLE PLAN

3/4" = 1'-0"

GC TO MAINTAIN AT LEAST 2 PODS/POS DURING THE REMODEL WORK. ENSURE DATA CABLE CAN BE EXTENDED TO TEMPORARY LOCATION. SAVE ALL EXISTING PODS UNTIL CONSTRUCTION IS COMPLETED.



ELECTRICAL IDENTIFICATION NOTE

PROVIDE IDENTIFICATION FOR ALL PANELS, DISCONNECTS AND TRANSFORMERS USING ENGRAVED NAMEPLATES. WHITE LETTERING ON BLACK BACKGROUND, NAMEPLATES SHALL IDENTIFY PANEL DESIGNATION (NAME) VOLTAGE, PHASE AND WIRE CONFIGURATION. PROVIDE TYPE WRITTEN DIRECTORIES UNDER PLASTIC COVER FOR ALL PANEL. BRANCH CIRCUITS IDENTIFY THE WIRING FOR ALL BRANCH CIRCUITS USING APPROVED WIRE MARKERS.

ADA NOTE

LIGHT SWITCHES, ELECTRICAL OUTLETS, AND OTHER ENVIRONMENTAL CONTROLS SHALL HAVE OPERABLE PARTS TO THE CONTROLS LOCATED NO HIGHER THAN 48", AND NO LOWER THAN 15".

WIRING COLOR CODE

ALL WIRING SHALL BE COLOR-CODED AS FOLLOWS:

- 1P/20A DISCONNECT SWITCH
- DUPLEX RECEPTACLE
- GFCI QUAD RECEPTACLE
- GFCI DUPLEX RECEPTACLE
- SINGLE GANG MEDIA BOX SKU#146587
- DUAL CHANNEL POWER POLE - STALEY ELECT...
- 3#12 3/4" EMT CONDUIT

1.0 EA
3.0 EA
1.0 EA
1.0 EA
1.0 EA
1.0 EA
3.0 EA
349.6 FT

DESIGN PARAMETERS: 2020 NATIONAL ELECTRICAL CODE

ELECTRICAL KEY NOTES

- INSTALL PEP BOYS FURNISHED DUAL CHANNEL POWER POLE - STALEY ELECTRIC SUPPLY
- ALL POWER CIRCUITED THROUGH PANEL "CR" WILL BE ROUTED THROUGH AN INDIVIDUAL UPS. (1) PER REGISTER
- QUAD RECEPTACLE AT 38" A.F.F. FOR CAFE BAR COORDINATE WITH PEP BOYS PROJECT MANAGER FOR LOCATION PRIOR TO ROUGH-IN. REQUIRE 24 HR POWER FOR FRIDGE AND COFFEE MAKER PLACE.
- SHOW WINDOW RECEPTACLE TO BE CEILING SWITCH TO BE LOCATED IN MANAGERS OFFICE.
- PROVIDE DISCONNECT FOR WATER HEATER. CONNECTION LOCATED ON PLATFORM ABOVE.
- COORDINATE LOCATION OF BOTTOM OF TV TO BE 48" A.F.F. SINGLE GANG MEDIA BOX SKU#146587 MOUNTED AT 58" A.F.F. TO BOTTOM OF BOX. PROVIDE RECESSED POWER DUPLEX FOR TV.
- PROVIDE RECEPTACLE FOR NEW BREAKROOM AREA MICROWAVE AND MINI FRIDGE.

NOTES:

- COORDINATE ANY ELECTRICAL NETWORK AND TELECOMMUNICATIONS WORK WITH PEP BOYS.
- RELOCATE BURGLAR ALARM DEVICES IN MANAGERS OFFICE.
- AT PROJECT RICK OFF MEETING, COORDINATE LIGHTING FIXTURE LOCATIONS IN PEP BOYS STORAGE AREAS.
- GC TO REMOVE RTUS FROM EMS SYSTEM AND SUPPLY PROGRAMMABLE T-STAT WITH CLEAR LOCKABLE COVER.
- IF SERVER HAS NOT BEEN RELOCATED THEN GC TO PROVIDE 240V PAINTED WHITE BACKER BOARD WITH BOTTOM OF BOARD AT 60" AFF. PROVIDE 2 QUAD SETS - ONE (1) STANDARD QUAD & ONE (1) 15A HR IG RATED POWER QUAD W/ ORANGE OUTLETS - BOTH RECESSED INTO WALL.
- REMOVE THESE AREAS FROM EMS SYSTEM.
 - RTUS REMOVE FROM EMS AND SUPPLY PROGRAMMABLE T-STAT WITH CLEAR LOCKABLE COVER FOR EACH RTU.
 - EXTERIOR LIGHTS SHOULD BE ON A TIMER WITH LIGHT SENSOR (REMOVE FROM EMS) IF TIMER & PHOTOCELL ARE NO FUNCTIONAL. GC TO PROVIDE AND INSTALL YORK MODEL #DZS2008P.
 - VEHICLE SERVICE AREA - REMOVE FROM EMS WITH SWITCHES LOCATED NEAR PRODUCTIVITY COUNTER.
 - NEW WORK SHOULD NOT BE ON EMS.
 - RESTROOMS.
 - CONFERENCE ROOM SWITCH WITH MOTION SENSOR.
- ALL RECEPTACLE AND LIGHT SWITCH PLATES TO BE COLOR WHITE. EXCEPTION - DEDICATED IG OUTLETS SHALL BE ORANGE.
- EXISTING LIGHTING TO REMAIN IN ALL AREAS POSSIBLE.
- RE-CENTER EXISTING BOH LIGHT FIXTURES TO CENTER OF NEW RACKING ROW.
- GC TO REMOVE AND MAKE SAFE ALL ELECTRICAL OUTLETS WHERE RACKING WAS REMOVED LEAVING ABANDONED WIRING, SENSORS AND THE LIKE.

THE CONTRACTORS SHALL COORDINATE ALL REQUIRED ACCESS TO ALL ADJOINING SPACES AND LOCKED SPACES WITH THE GENERAL CONTRACTOR WHO SHALL IN TURN COORDINATE THESE REQUIREMENTS WITH THE BUILDING MANAGEMENT TEAM.

ANY PENETRATIONS OF A FIRE RATED WALL BY ANY MECHANICAL AND PLUMBING PIPING, DUCTWORK (WITHOUT FDS), CONDUITS AND CABLING FOR POWER, CONTROLS OR DATA/TELEPHONE MUST BE FIRED RATED PER U.L. DETAILS ON THIS SHEET. REFER TO ARCHITECTURAL CODE REVIEW PLAN SHEETS FOR EXACT LOCATIONS OF ALL FIRE RATED WALLS.

THE ELECTRICAL CONTRACTOR SHALL BEAR ALL EXPENSES THAT OTHER TRADES INCUR AS A RESULT OF PHYSICAL MODIFICATIONS REQUIRED BY APPROVED ALTERNATE ELECTRICAL EQUIPMENT OTHER THAN ORIGINALLY SPECIFIED OR SCHEDULED.

THE FIRE ALARM CONTRACTOR IS SOLELY RESPONSIBLE FOR THE FIRE ALARM DESIGN, DESIGN APPROVAL, INSTALLATION AND FINAL ACCEPTANCE BY THE AUTHORITIES HAVING JURISDICTION. DEVICES AND EQUIPMENT ON THE DRAWING ARE FOR REFERENCE ONLY. FINAL DEVICE TYPES, QUANTITIES, AND LOCATIONS ARE THE RESPONSIBILITY OF THE FIRE ALARM CONTRACTOR. THE ELECTRICAL CONTRACTOR SHALL COORDINATE REQUIREMENTS WITH THE FIRE ALARM CONTRACTOR AND PROVIDE ROUGH-IN AND POWER FOR ALL DEVICES PER THE APPROVED FIRE ALARM PLANS.

- POD/POWER POLE NOTES:
- REUSE OF EXISTING PODS WILL BE A STANDARD UNLESS EXISTING PODS ARE IN POOR CONDITION AND/OR OTHERWISE STATED BY PBY. FINAL DETERMINATION AT KICK-OFF/PRE-BID MEETINGS - COLORS OF EXISTING PODS COULD BE BLACK, BLUE, RED OR A COMBINATION. MIXED RED AND BLUES ARE ACCEPTABLE. NO MIXED COLORS WITH BLACK. IF THIS OCCURS, REPLACE ALL PODS TO NEW.
 - INSTALL POWER POLES. IG QUAD (24 HR POWER) AND STANDARD QUAD.
 - GC TO ASSEMBLE AND SECURE PODS TO THE FLOOR. ALL SECUREMENT OF PODS TO BE HIDDEN, NOT VISIBLE TO PUBLIC.
 - AT POWER POLES, GC TO PROVIDE INSTALL CHROME ESCUTCHEON PLATES AT CEILING AND DESK AT DESK. A BLACK PLASTIC ESCUTCHEON COVER IS ACCEPTABLE.
 - COLOR OR IS CIRCUIT "ORANGE" (24 HOUR POWER) TYPICAL.
 - ADA SHELF - TO BE 30"X36" SUPPLIED IN PODS SHIPMENT ATTACHED TO SHELF.
 - GC TO LABEL, RE-LABEL ALL PANELS WHICH ARE PART OF THE NEW WORK.
 - GC TO PROVIDE DEDICATED CIRCUIT AND OUTLET TO "PA" PANEL IF NOT PRESENT.

EXISTING EMS (NOVAR) NOTES:

- RTUS SERVICE PEP BOYS AREAS - REMOVE FROM EMS AND INSTALL PROGRAMMABLE T-STAT WITH CLEAR LOCKABLE COVER FOR EACH RTU.
- ALL NEW WORK SHALL NOT BE ON EMS. NEW LIGHTING TO BE CONTROLLED WITH SWITCHES.
- REMAINING EMS DEPENDENT SERVICES TO BE IDENTIFIED AND LABELED.
- GC SHALL EXTEND EXISTING BUILDING SIGNAGE CIRCUITS TO NEW PBY SIGN LOCATIONS FOR NEW SIGNAGE.

DISTRIBUTION: DATE: 09-20-2024

BID: 09-20-2024

PROJECT INFO:
PROJECT NUMBER: ---
DRAWN BY: CBJ/J
CHECKED BY: JD
NOTE • COPYRIGHT:

UNAUTHORIZED REPRODUCTION OR OTHER USE OF THIS DRAWING IS PROHIBITED.

DRAWING NAME + NUMBER

Power Plan

E1

ACEI
ADVANCED CONSULTING ENGINEERS
MECHANICAL ELECTRICAL INDUSTRIAL

PO BOX 927
ROCKFORD, AR 72756
PH 479-631-1772
EX 479-631-1859
ACEI@ADVANCEDENGINEERS.COM

PRIOR TO BID/START OF CONSTRUCTION REQUIREMENTS. THESE DOCUMENTS ARE DIAGRAMMATIC IN NATURE AND IN SOME CASES, BASED ON INFORMATION THAT IS PROVIDED BY THE OWNER, THE CONTRACTOR SHALL VERIFY EXISTING CONDITIONS IN THE FIELD PRIOR TO BID. ANY DISCREPANCIES OR CONDITIONS INTERFERING WITH THE ABILITY OF THE CONTRACTOR TO COMPLETE THE WORK AS OUTLINED SHALL BE BROUGHT TO THE ATTENTION OF THE ARCHITECT. ANY COST SAVINGS OPTIONS OR REUSE OF EXISTING EQUIPMENT, MATERIAL OR DEVICES SHALL BE MADE AVAILABLE TO THE OWNER AND THE ARCHITECT FOR REVIEW. ANY REQUESTED CHANGES DUE TO THE CONTRACTORS OVERSIGHT OR FAILURE TO VISIT THE SITE PRIOR TO BID, SHALL NOT BE AUTHORIZED OR COMPENSATED. COORDINATE ALL LOUVER SIZES AND LOCATIONS PRIOR TO START OF CONSTRUCTION. LAYOUT ALL EQUIPMENT IN MECHANICAL ROOM TO ENSURE PROPER SPACE AND CLEARANCES ARE AVAILABLE. CONTACT ARCHITECT MANUALLY WITH ANY ISSUES.

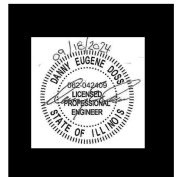
REFLECTED CEILING PLAN NOTES	
1	THIS SHEET IS INTENDED TO SHOW GENERAL COORDINATION OF OVERHEAD WORK.
2	VERIFY MEASUREMENTS WITH CORRESPONDING CONSTRUCTION OR EXISTING CONDITIONS PRIOR TO PROCEEDING WITH THE WORK, AND NOTIFY THE ARCHITECT IMMEDIATELY OF SIGNIFICANT DISCREPANCIES USING THE "CONSTRUCTION REQUEST FOR INFORMATION" FORM AND SUPPLEMENTARY CONTRACTOR PROVIDED DETAILS AS REQUIRED.
3	ALL OVERHEAD ITEMS INCLUDING STRUCTURAL DECK, EQUIPMENT, CONDUIT ETC. TO BE PARTED WHERE INDICATED.
4	DO NOT SUSPEND FROM PIPING OR MECHANICAL EQUIPMENT, IF REQUIRED, USE HANGERS THAT ARE SUITABLE FOR THE EXISTING FLOOR OR ROOF CONSTRUCTION ABOVE.
5	UNLESS NOTED OTHERWISE GRID SHOULD BE CENTERED
6	FOR LIGHT FIXTURE SPECIFICATIONS - REFERENCE ENGINEERING'S

LIGHTING FIXTURE SCHEDULE						
TYPE	DESCRIPTION	MANUFACTURER AND MODEL #	MOUNTING	VOLTAGE	LAMPS / FIXTURE	NOTES
A	6" RECESSED DOWNLIGHT	LITHONIA LIGHTING LDM6-3515-UG-AR-US-MOULT-Q210	CEILING RECESSED	120V/277V	LED 3000°K	17.5
B	NOT USED					
EM	EMERGENCY FIXTURE	LITHONIA LIGHTING ELMEL-LAC-LT-1PT-SORT	WALL SURFACE	120V/277V	LED Q1 1.5W	(2) (2) (4)
X	EXIT SIGN	LITHONIA LIGHTING LDM6-3515-UG-AR-US-MOULT-Q210	UNIVERSAL	120V/277V	LED 1.5W	(2) (2) (4)
X/EM	COMBINATION EXIT/EMERGENCY FIXTURE	LITHONIA LIGHTING LHOM-LED-R-SD	UNIVERSAL	120V/277V	LED Q1 1.5W	(2) (2) (4)
W	NOT USED					

NOTES:
1. NOT USED
2. CONNECT EMERGENCY BACK-UP AHEAD OF ALL LIGHTING CONTACTORS AND AHEAD OF ALL LOCAL SWITCHING.
3. MOUNT AT 7'-0" ABOVE FINISHED FLOOR TO BOTTOM OF FIXTURE WHEN MOUNTED ON WALL SURFACE OR IF ABOVE DOOR FRAME WHEN MOUNTED CENTERED ABOVE DOOR.
4. PROVIDE FIXTURE WITH BATTERY BACK-UP CAPABLE OF 90 MINUTE RUNTIME UPON LOSS OF NORMAL POWER.
5. MOUNT 8" BELOW CEILING.
CONTRACTOR SHALL RELAMP ALL EXISTING LIGHT FIXTURES WITH LED BULBS.

CEILING AND LIGHTING NOTES

- EXISTING ACT CEILING AT BACK OF HOUSE AND FRONT SHALL BE RE-USED UNLESS OTHERWISE NOTED IN DRAWINGS. REUSE EXISTING CEILING TILE CONDITIONS WHEN AND WHEREVER POSSIBLE. STANDARD WILL BE PAINT THE GRID AND PROVIDE NEW CEILING TILE MATCH EXISTING CONDITIONS.
ADDITIONAL HANGER TO SUPPORT LIGHT FIXTURES IN AREAS SUBJECT TO SEISMIC ACTIVITY. PROVIDE GRID SYSTEM RATE FROM SAME. RE-LAMP ALL FIXTURES AS NECESSARY FOR ALL NON-FUNCTIONING FIXTURES. RE-CENTER BACK OF HOUSE FIXTURES TO CENTER OF RE-ALIGNED BACK OF HOUSE RACKING. PLACE SWITCHES FOR NEW WORK AS NOTED ON DRAWINGS. IF MISSING, GC TO SEND RFI FOR DIRECTION.
- EXISTING LIGHT FIXTURES TO BE RELOCATED IN BETWEEN AISLES.
- ALL ELEMENTS SHALL BE PROVIDED AND INSTALLED BY GENERAL CONTRACTOR.
- INSTALL ALL MATERIALS IN STRICT ACCORDANCE WITH MANUFACTURER'S SPECIFICATIONS AND INSTRUCTIONS. INSTALL ROLL BATT INSULATION PERPENDICULAR TO THE CROSS TEES SO THAT THE WEIGHT IF THE INSULATION IS CARRIED BY THE GRID.
- IF NEW ACOUSTICAL CEILING TILES INSTALLED, ALLOW FOR (1) UNOPENED BOX OF CEILING TILES TO REMAIN IN STORE.
- NEW WORK SHALL NOT BE ON EMS. OCCUPANT SENSORS PLACED IN RESTROOM(S), WITH SWITCH OVERRIDE.
- PROVIDE UNSWITCHED CIRCUIT FOR EMERGENCY BATTERY PACKS. CONNECT TO BRANCH CIRCUIT AHEAD OF ALL CONTACTORS AND LOCAL SWITCHING.
- PROVIDE ACQUITY NIGHT MODE/WS-PDT-2P-FAN-WH WALL MOUNTED OCCUPANCY SENSOR. SEE DETAIL ON THIS SHEET
- PROVIDE CONNECTION TO NEW CEILING MOUNTED EXHAUST FAN. SEE DETAIL 4-E2.2 FOR WIRING INFORMATION.
- "LV" LINE TYPE REPRESENTS CAT-5E CABLE. PROVIDE WITH R CONNECTIONS.
- EXISTING EXTERIOR LIGHTING TO REMAIN, UNLESS NOTED BY NEW WORK. GC TO RELAMP BURNT OUT FIXTURES - TYPICAL.
- CONNECT THROUGH EXISTING INTERIOR LIGHTING CONTRACTOR.
- PROVIDE ACQUITY NIGHT MODE/WS-PDT-2P-FAN-WH WALL MOUNTED OCCUPANCY SENSOR. SEE DETAIL ON THIS SHEET
- EXISTING LIGHTING TO REMAIN IN SERVICE. CONTRACTOR SHALL CLEAN AND RE-BULB ALL NON-FUNCTIONAL FIXTURES.
- PROVIDE ACQUITY NIGHT MODE/WS-PDT-D-WH WALL MOUNTED OCCUPANCY SENSOR.
- GC TO RE-LAMP NONFUNCTIONAL BACK OF HOUSE AND SHOP LIGHTS WITH REPLACEMENT BULBS OR T-8 LAMPS. LIGHT FIXTURES TO BE RELOCATED IN BETWEEN AISLES.
- OCCUPANT SENSORS PLACED IN RESTROOM(S) ONLY.
- BUILDING LIGHTS AND SIGNAGE LIGHTS TO BE ON COMBO TIMER / PHOTOCELL COMBO. IF NOT PROVIDE-MANUFACTURER-TORK MODEL# DZS200BP.
- GC TO USE EXISTING SIGNAGE CIRCUIT FOR NEW SIGNAGE. PROVIDE RELOCATION OF JUNCTION BOX AS REQUIRED FOR NEW SIGN LOCATIONS. PROVIDE TIMER AND LIGHT SENSOR.
- ALL LOW VOLTAGE, SECURITY AND CCTV CABLE SHALL BE PULLED AND INSTALLED BY PEP BOYS CONTRACTOR.
- IN ALL EXISTING RESTROOMS, RE-LAMP NON-FUNCTIONAL LIGHT FIXTURES.
- INTERIOR SIGN PACKAGES WILL ONLY BE USED FOR HIGHLY PRODUCTIVE STORE LOCATIONS, OTHERWISE NO NEW INTERIOR SIGNAGE PACKAGES.



CLIENT + PROJECT



STORE ALTERATIONS
PEP BOYS
STORE# 0966
620 NORTH GREEN BAY ROAD
WAUKEGAN, IL 60085

DISTRIBUTION: DATE:
BID: 09-20-2024

PROJECT INFO:
PROJECT NUMBER: ---
DRAWN BY: CHAJ
CHECKED BY: JD
NOTE + COPYRIGHT:

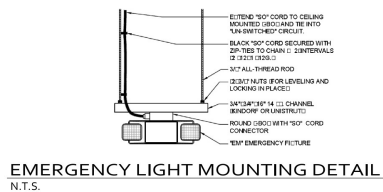
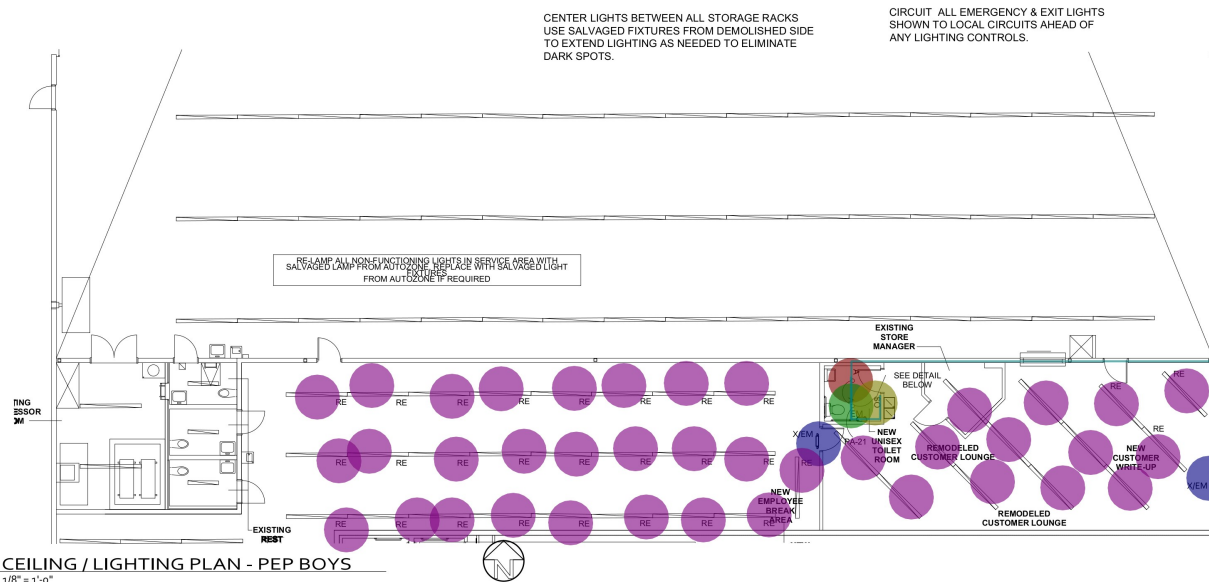
DRAWING NAME + NUMBER

Lighting Plan

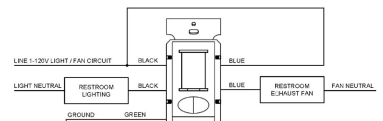
E2

ACEI
ADVANCED CONSULTING ENGINEERS
MECHANICAL ELECTRICAL INDUSTRIAL
PO BOX 927
ROGERS, AR 72756
PH 479-631-1772
FX 479-631-1859
ACEI@ADVANCEDENGINEERS.COM

PRIOR TO BID/START OF CONSTRUCTION REQUIREMENTS. THESE DOCUMENTS ARE DIAGNOSTIC IN NATURE AND IN SOME CASES, BASED ON INFORMATION THAT IS PROVIDED BY THE OWNER. THE CONTRACTOR SHALL VERIFY EXISTING CONDITIONS IN THE FIELD PRIOR TO BID. ANY DISCREPANCIES OR CONDITIONS INTERFERING WITH THE ABILITY OF THE CONTRACTOR TO COMPLETE THE WORK AS OUTLINED SHALL BE BROUGHT TO THE ATTENTION OF THE ARCHITECT. ANY COST SAVINGS OPTIONS OR REUSE OF EXISTING EQUIPMENT, MATERIAL OR DEVICES SHALL BE MADE AVAILABLE TO THE OWNER AND THE ARCHITECT FOR REVIEW. ANY REQUESTED CHANGES DUE TO THE CONTRACTORS OVERSIGHT OR FAILURE TO VISIT THE SITE PRIOR TO BID, SHALL NOT BE AUTHORIZED OR COMPENSATED. COORDINATE ALL LOUVER SEES AND LOCATIONS PRIOR TO START OF CONSTRUCTION. LAYOUT ALL EQUIPMENT IN MECHANICAL ROOM TO ENSURE PROPER SPACING AND CLEARANCES ARE AVAILABLE. CONTACT ARCHITECT IMMEDIATELY WITH ANY ISSUES.



EMERGENCY LIGHT MOUNTING DETAIL
N.T.S.



- A: 6" RECESSED DOWNLIGHT LITHONIA LIGHTING L... 1.0 EA
- A EM: 6" RECESSED DOWNLIGHT LITHONIA LIGHTIN... 1.0 EA
- OCCUPANCY SENSOR SWITCH 1.0 EA
- X/EM: COMBINATION EXIT/EMERGENCY FIXTURE LIT... 2.0 EA
- RELAMP EXISTING LIGHT FIXTURES 38.0 EA
- 3#12 3/4" EMT CONDUIT 67.4 FT